

- Advanced L2 features
- Support for Multicast (IGMP Snooping, MVR)
- Advanced security functions (L2-L4 ACL, IP Source Guard, Dynamic ARP Inspection, etc.)
- Uninterruptible power supply via battery<sup>1</sup>



MES1428



MES2428


The switches provide end users connection to networks of large enterprises, small and mid-sized businesses and service providers via Fast and Gigabit Ethernet interfaces.

The switches support Virtual Local Area Networks (VLAN), multicast groups and advanced security functions.


### Uninterruptible power supply<sup>1</sup>

MES1428B and MES2428B switches allow to connect storage battery in order to provide uninterruptible power supply in case of 220V line failure. The switches are equipped with power supply unit that allows charging storage battery if 220V supply line is available. The redundant power system provides monitoring for power supply line and notifies on power sources switching.

### Technical features

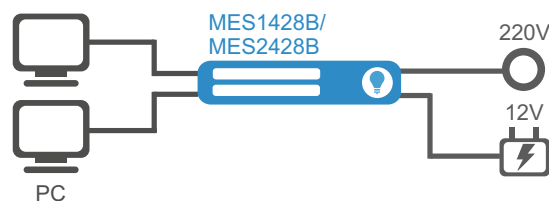
	MES1428	MES1428B 	MES2428	MES2428B	MES2428T
<b>General parameters</b>					
Packet processor	Realtek RTL8332M	Realtek RTL8332M	Realtek RTL8382M	Realtek RTL8382M	Realtek RTL8382M
10/100BASE-TX	24	24	–	–	–
10/100/1000BASE-T	–	–	24	24	24
Combo 10/100/1000BASE-T/ 100BASE-FX/1000BASE-X	4	4	4	4	4
Input dry contacts	–	–	–	–	4 pairs
Console port	RS-232 (RJ-45)				
Bandwidth	12.8 Gbps	12.8 Gbps	56 Gbps	56 Gbps	56 Gbps
Throughput for 64-byte packets	9 MPPS	9 MPPS	41.658 MPPS	41.658 MPPS	41.658 MPPS
MAC table	8K				
VLAN table	4094				
ACL table	1.5K				
Jumbo frame size	the maximum packet size is 10 000 bytes				
Buffer memory	512 KB				
RAM (DDR3)	256 MB				
ROM (SPI Flash)	32 MB				
L2 Multicast groups (IGMP Snooping)	509				
Quality of Service (QoS)	8 output queues per port				

<sup>1</sup> Only for MES1428B and MES2428B

 – the device is under development

### Technical features of redundant power supply\* (for MES1428B and MES2428B)

	Battery capacity, Ah	Battery life, h	Battery charge time, h
MES1428B	12	≈17	≈9
	17	≈20	≈13
	20	≈22	≈15
MES2428B	12	≈9	≈9
	17	≈15	≈13
	20	≈17	≈15



\* Note that:  
 – Specifications are given for ambient temperature +25°C;  
 – It is recommended to use batteries with capacity of at least 12Ah for MES 1428B and MES2428B.

## Features and capabilities

### Interface features

- Head-of-line blocking (HOL) protection
- Auto MDI/MDIX
- Jumbo frames
- Flow Control IEEE 802.3X
- Port mirroring
- RSPAN

### MAC table

- Independent learning mode per VLAN
- MAC Multicast Support
- Configurable aging time of MAC addresses
- Static MAC Entries
- MAC change events monitoring per ports

### VLAN features

- IEEE 802.1Q
- Q-in-Q
- Selective Q-in-Q (VLAN Translation)

### L2 Multicast features

- Multicast profiles
- Static Multicast groups
- IGMP Snooping v1,2,3
- Port-based IGMP Snooping Fast Leave
- IGMP proxy-report features
- MLD Snooping v1,2
- IGMP Querier
- MVR

### L2 features

- STP (Spanning Tree Protocol, IEEE 802.1d)
- RSTP (Rapid Spanning Tree Protocol, IEEE 802.1d)
- MSTP (Multiple Spanning Tree Protocol, IEEE 802.1s)
- STP Root Guard
- STP Loop Guard
- STP BPDU Guard
- BPDU Filtering
- Spanning Tree Fast Link option

- Layer 2 Protocol Tunneling
- Loopback Detection (LBD)
- Port isolation
- Storm Control for different types of traffic (broadcast, multicast, unknown unicast)

### Link Aggregation functions

- Static LAG
- Dynamic LAG (LACP)
- LAG Balancing Algorithm

### Service functions

- Virtual cable testing (VCT)
- Optical transceiver diagnostics

### IPv6

- IPv6 Host
- Dual-stack

### Security functions

- DHCP Snooping
- DHCP Option 82
- IP Source Guard
- Dynamic ARP Inspection (Protection)
- MAC-based authentication, Port Security, static MAC entries
- DoS attacks prevention
- Traffic segmentation
- DHCP clients filtering
- BPDU attacks prevention
- PPPoE Intermediate agent

💡 – MES1428B is under development

## Features and capabilities

### Access control lists (ACL)

- L2-L3-L4 ACL (Access Control List)
- IPv6 ACL
- ACL based on:
  - Switch port
  - IEEE 802.1p priority
  - VLAN ID
  - EtherType
  - DSCP
  - IP type
  - TCP/UDP port number
  - User Defined Bytes

### Quality of service (QoS) and rate limiting

- Shaping, policing
- Support for IEEE 802.1p Class of Service
- Scheduling algorithms: Strict Priority/Weighted Round Robin (WRR)
- IEEE 802.1p priority for management VLAN
- ACL-based traffic classification
- ACL-based CoS/DSCP mark assignment
- CoS to DSCP remarking
- DSCP to CoS remarking
- ACL-based VLAN assignment

### OAM

- IEEE 802.3ah, Ethernet OAM
- Dying Gasp
- IEEE 802.3ah Unidirectional Link Detection (UDLD)

### Main management functions

- Download and upload of configuration file via TFTP/SFTP
- Automated backup of configuration file via TFTP/SFTP
- Simple Network Management Protocol (SNMP)
- Command Line Interface (CLI)
- Syslog
- Simple Network Time Protocol (SNTP)
- Traceroute
- LLDP (IEEE 802.1ab) + LLDP MED

- Access management – privilege levels for users
- Management interface blocking
- Local authentication
- IP addresses filtering for SNMP
- RADIUS and TACACS+ clients
- SSH server
- SSL
- Input commands logging via TACACS+
- DHCP autoprovision
- DHCP Relay (support for IPv4)
- DHCP Relay Option 82
- PPPoE Circuit-ID tag adding
- Flash File System
- Debugging commands
- Limiting of traffic to CPU
- Password encryption
- Ping (support for IPv4/IPv6)
- IPv4/IPv6 static routes support
- Support for several versions of configuration file

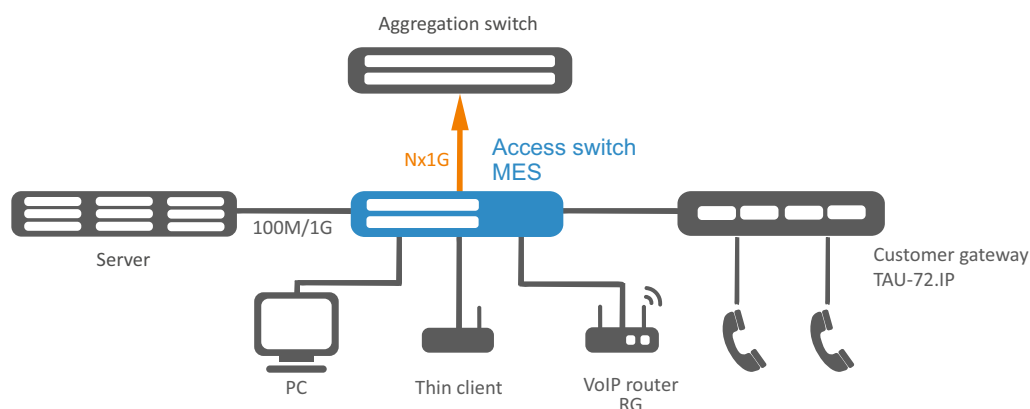
### Monitoring functions

- Interface statistics
- CPU utilization monitoring per task and per queue
- RAM utilization monitoring
- Temperature monitoring
- TCAM monitoring


### Uninterruptible power supply<sup>1</sup>

- Automatic switching to storage battery (12V) in case of 220V supply line failure and switching back
- Battery charging (12V) during primary network operation (220V)
- Power source type monitoring (including SNMP)
- Notifications on power source switching
- Battery connection indication
- Low battery alarm
- Short circuit failure protection

## Use case




<sup>1</sup> Only for MES1428B and MES2428B

	MES1428	MES1428B 	MES2428	MES2428B	MES2428T
<b>Physical specifications and ambient parameters</b>					
Power supply	220 VAC, 50 Hz	220 VAC, 50 Hz/ 12 VDC	220 VAC, 50 Hz/ 18–72 VDC	220 VAC, 50 Hz/ 12 VDC	220 VAC, 50 Hz/ 18–72 VDC
Maximum power consumption	10 W	37 W (including battery charging)	18 W	45 W (including battery charging)	18 W
Hardware support for Dying Gasp	yes	no	yes	no	no
Operating temperature	from -20 to +50 °C				
Storage temperature	from -40 to +70 °C				
Operating humidity	no more than 80%				
Cooling	passive				
Dimensions (WxDxH), mm	430x178x44				
Weight	2.26 kg		2.35 kg		2.37 kg


## Ordering information

Name	Description
<b>MES1428</b>	Ethernet switch MES1428, 24 ports 10/100BASE-TX, 4 Combo ports 10/100/1000BASE-T/100BASE-FX/1000BASE-X, L2, 220 VAC
<b>MES1428B</b> 	Ethernet switch MES1428B, 24 ports 10/100BASE-TX, 4 Combo ports 10/100/1000BASE-T/100BASE-FX/1000BASE-X, L2, 220 VAC, 12 VDC
<b>MES2428 AC</b>	Ethernet switch MES2428, 24 ports 10/100/1000BASE-T, 4 Combo ports 10/100/1000BASE-T/100BASE-FX/1000BASE-X, L2, 220 VAC
<b>MES2428 DC</b>	Ethernet switch MES2428, 24 ports 10/100/1000BASE-T, 4 Combo ports 10/100/1000BASE-T/100BASE-FX/1000BASE-X, L2, 18-72 VDC
<b>MES2428B</b>	Ethernet switch MES2428B, 24 ports 10/100/1000BASE-T, 4 Combo ports 10/100/1000BASE-T/100BASE-FX/1000BASE-X, L2, 220 VAC, 12 VDC
<b>MES2428T AC</b>	Ethernet switch MES2428T, 24 ports 10/100/1000BASE-T, 4 Combo ports 10/100/1000BASE-T/100BASE-FX/1000BASE-X, 4 input dry contact pairs, L2, 220 VAC
<b>MES2428T DC</b>	Ethernet switch MES2428T, 24 порта 10/100/1000BASE-T, 4 Combo ports 10/100/1000BASE-T/100BASE-FX/1000BASE-X, 4 input dry contact pairs, L2, 18–72 VDC

 – the device is under development

Contact us

About Eltex

  
+7 (383) 274 10 01  
+7 (383) 274 48 48

  
eltex@eltex-co.ru

  
www.eltex-co.com

**Eltex** company is a leading Russian developer and manufacturer of telecommunication equipment with 25 years of history. Integrity of solutions and seamless integration capability into Customer infrastructure is a priority area of company development.