

Typical tasks performed by service routers:

- Data routing
- Construction of secure network perimeter (Firewall)
- Network attacks prevention and monitoring (IPS/IDS)
- Service quality monitoring (SLA)
- Filtering of network data by various criteria (including filtering by applications)
- Organization of secure network tunnels between different offices of a company
- Remote connection of staff members to office
- Management and distribution of Internet channel width within an office by using QoS
- Organization of redundant connection (by means of wires or 3G/LTE modem)
- User termination and bandwidth limiting – BRAS (IPoE)

Performance

The key elements of ESR series are data processing hardware acceleration means that ensure a high level of performance. Hardware and software processing is distributed among the units of the device.

ESR-10, ESR-12V, ESR-12VF, ESR-14VF

ESR-10, ESR-12V(F), ESR-14VF functional area

ESR-10, ESR-12V, ESR-12VF and ESR-14VF service routers are designed to be used for connection of small and middle-sized offices in enterprise networks.

Firewall and router functionality provides security of different types of Internet connection.

ESR-12V, ESR-12VF, ESR-14VF have FXS ports to connect up to 3 analogue phones to an enterprise network without using gateways. FXO port provides phone redundancy via analogue line in case of central PBX connection failure.

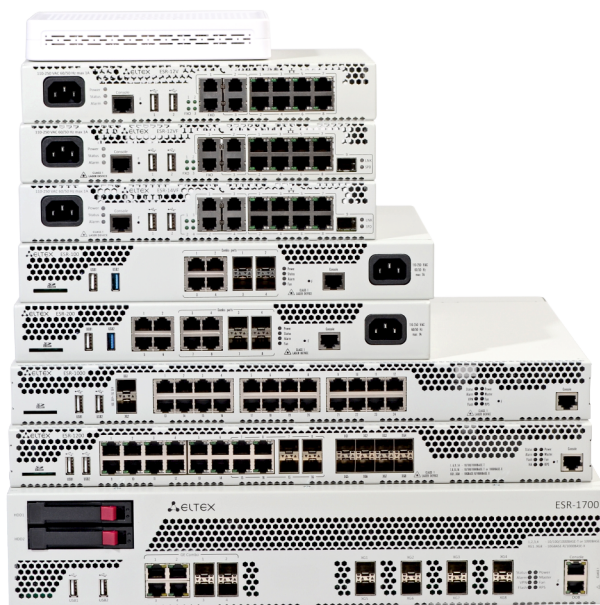
The ESR-14VF model differs in that it has 4 FXS ports and no FXO ports.

ESR-20, ESR-21

ESR-20/21 functional area

ESR-20 and ESR-21 are multipurpose service routers developed in compliance with requirements of energy and oil-and-gas industries. The devices support advanced routing, WAN organization and network security functions.

The main feature of ESR-21 is the presence of additional RS-232 ports that can be used for implementing additional functionalities – remote device management via console (AUX mode) and connecting wired/GSM modems to firewalls.



- Solution for small and middle-sized offices
- Flexible service configuration
- Interfacing with the equipment of leading manufacturers
- FXS ports for phone connection
- FXO port for connection redundancy
- Firewall and router functionality



ESR-20



ESR-21

ESR-100, ESR-200, ESR-1000, ESR-1200, ESR-1500, ESR-1700

ESR-100/200/1000/1200/1500/1700 functional area

The family of ESR routers is a universal hardware platform capable of performing a wide range of tasks related to network security, data encryption, user termination etc. The product line includes models that can be used in networks of various sizes - from small enterprise networks to carrier networks and data centers.

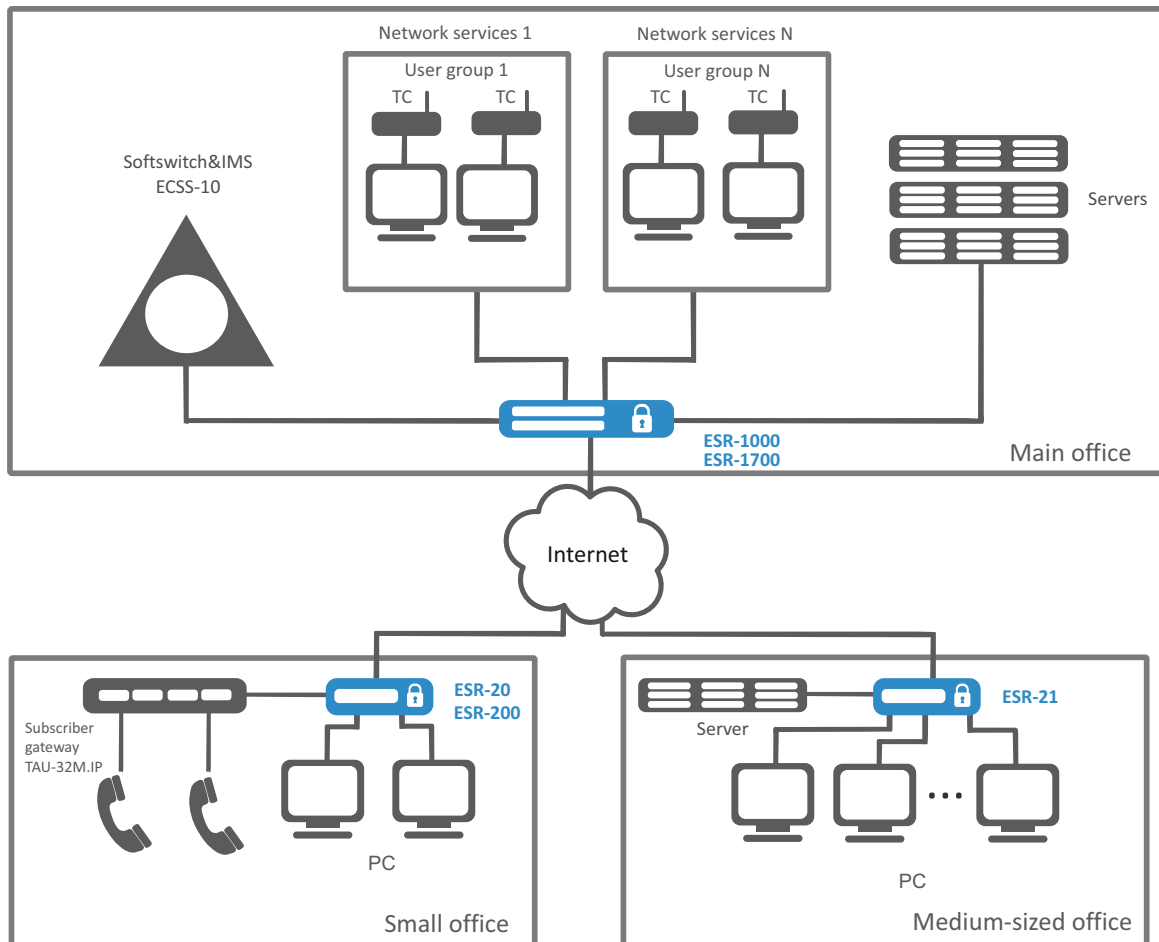


ESR-1500

- Scalable solution for different fields of application
- Flexible service configuration
- Interfacing with the equipment of leading manufacturers
- Hardware acceleration of data processing

Use case

The model scheme for enterprise networks:



ESR-10/12V/12VF/14VF/20/21/100/200 technical features

| | ESR-10 | ESR-12V | ESR-12VF | ESR-14VF | ESR-20 | ESR-21 | ESR-100 | ESR-200 |
|--|---|---------|----------|----------|--------------------------|----------------------|----------------------|--------------------------|
| General parameters | | | | | | | | |
| Packet processor | Broadcom NS+ (BCM58625) | | | | Broadcom NS2 | | Broadcom XLP104 | Broadcom XLP204 |
| Interfaces | | | | | | | | |
| Combo 10/100/1000BASE-T/ 1000BASE-X SFP (LAN/WAN) | — | — | — | — | 2 | — | 4 | 4 |
| Ethernet 10/100/1000BASE-T (LAN/WAN) | 4 | 8 | 8 | 8 | 2 | 8 | — | 4 |
| Ethernet 10/100/1000BASE-X SFP (LAN/WAN) | 2 | — | 1 | 1 | — | 4 | — | — |
| Serial (RS-232) | — | — | — | — | — | 3 | — | — |
| Console (RJ-45) | 1 | | | | | | | |
| FXS | — | 3 | 3 | 4 | — | — | — | — |
| FXO | — | 1 | 1 | — | — | — | — | — |
| USB 2.0 | 2 | | | | 1 | | | |
| USB 3.0 | — | | | | 1 | | | |
| SD-nopt | — | | | | 1 | | | |
| Performance | | | | | | | | |
| Firewall/NAT/routing (1518B frames) | 0.32 Gbps 26k pps | | | | 1.84 Gbps 162k pps | 2.1 Gbps 174k pps | 1.3 Gbps 109k pps | 1.89 Gbps 155k pps |
| IPsec VPN (1456B frames) | 153 Mbps 13k pps | | | | 0.52 Gbps 44k pps | 0.53 Gbps 46k pps | 0.29 Gbps 25k pps | 0.46 Gbps 39k pps |
| IPS/IDS 10k rules | 59.51 Mbps 12.7k pps | | | | 150.63 Mbps 32.2k pps | | 46 Mbps 11.3k pps | 80.33 Mbps 17.21k pps |
| System features | | | | | | | | |
| VPN tunnels | 10 | | | | 250 | | | |
| Static routes | 1k | | | | 11k | | | |
| Concurrent sessions | 4k | | | | 256k | | | |
| VLAN support | up to 4k active VLANs in accordance with 802.1Q | | | | | | | |
| BGP routes | 800k | | | | 1.5M | | | |
| OSPF routes | 30k | | | | 300k | | | |
| RIP routes | 10k | | | | | | | |
| MAC table | 2k entries per bridge | | | | | | | |
| FIB size | 800k | | | | 1.4M | | | |
| VRF Lite | 32 | | | | | | | |

ESR-1000/1200/1500/1700 technical features

| | ESR-1000 | ESR-1200 | ESR-1500 | ESR-1700 |
|--|---|----------|------------------------|------------------------|
| General parameters | | | | |
| Packet processor | Broadcom XLP316L | | Broadcom XLP516 | Broadcom XLP780 |
| Interfaces | | | | |
| Combo 10/100/1000BASE-T/ 1000BASE-X SFP (LAN/WAN) | — | 4 | 4 | 4 |
| Ethernet 10/100/1000BASE-T (LAN/WAN) | 24 | 12 | 4 | — |
| 10GBASE-R SFP+/1000BASE-X (LAN/WAN) | 2 | 8 | 4 | 8 |
| Console (RJ-45) | 1 | | | |
| USB 2.0 | 2 | | | |
| HDD connection socket | — | | | 2 |
| SD port | 2 | | | — |
| Performance | | | | |
| Firewall/NAT/routing (1518B frames) | 8.9 Gbps 736k pps | | 12.5 Gbps 1032k pps | 39 Gbps 3216k pps |
| IPsec VPN (1456B frames) | 2.37 Gbps 203k pps | | 3 Gbps 257k pps | 13.4 Gbps 1151k pps |
| IPS/IDS 10k rules | 402.58 Mbps 86.25k pps | | 797 Mbps 171k pps | 3670 Mbps; 785k pps |
| System features | | | | |
| VPN tunnels | 500 | | | |
| Static routes | 11k | | | |
| Concurrent sessions | 512k | | | |
| VLAN support | up to 4k active VLANs in accordance with 802.1Q | | | |
| BGP routes | 2.8M | | | |
| OSPF routes | 500k | | | |
| RIP routes | 10k | | | |
| MAC table | 16k | 128k | | |
| FIB size | 1.7M | | | 3.0M |
| VRF Lite | 32 | | | |

Physical specifications

| | ESR-10 | ESR-12V | ESR-12VF | ESR-14VF | ESR-20 | ESR-21 | ESR-100 | ESR-200 |
|---|---------------------------------------|-----------------------|----------|----------|--------------------|------------|------------|---------|
| Physical specifications and ambient parameters | | | | | | | | |
| Maximum power consumption | 9 W | 22 W | | | 25 W | 32 W | 20 W | 25 W |
| Maximum noise level | — | | | | | | 57 dB | |
| Power supply | 220 VAC (via 12V, 1.5A power adapter) | 100-264 VAC, 60/50 Hz | | | | | | |
| Operating temperature | from 0 to +40 °C | | | | from -10 to +45 °C | | | |
| Storage temperature | from -40 to +70 °C | | | | | | | |
| Operating humidity | no more than 80% | | | | | | | |
| Storage humidity | from 10% to 95% | | | | | | | |
| Dimensions (WxDxH, mm) | 185x32x118 | 267x43.6x160.5 | | | 267x44x212 | 430x44x225 | 310x44x240 | |
| Weight | 1 kg | | | | 2 kg | 3.15 kg | 2.5 kg | |
| Average service life | at least 15 years | | | | | | | |

| | ESR-1000 | ESR-1200 | ESR-1500 | ESR-1700 |
|---|--|----------|------------|--|
| Physical specifications and ambient parameters | | | | |
| Maximum power consumption | 75 W | 85 W | 125 W | 250 W |
| Maximum noise level | 58 dB | | 70 dB | |
| Power supply | 100-240 VAC, 60/50 Hz 36 .. 72 VDC Up to two hot-swappable power units | | | 176-264 VAC, 60/50 Hz 36 .. 72 VDC Up to two hot-swappable power units |
| Operating temperature | from -10 to +45 °C | | | |
| Storage temperature | from -40 to +70 °C | | | |
| Operating humidity | no more than 80% | | | |
| Storage humidity | from 10% to 95% | | | |
| Dimensions (WxDxH, mm) | 430x44x352 | | 430x44x425 | 440x88x490 |
| Weight | 3.6 kg | 5.5 kg | 7 kg | 12 kg |
| Average service life | at least 15 years | | | |

Features and capabilities

High interfaces

- USB 3G/4G/LTE modem (except ESR-1700)
- E1 TopGate SFP
- DialUp modem (only for ESR-21)

Remote Access VPN clients

- PPTP/PPPoE/L2TP/OpenVPN/IPsec XAUTH

Remote Access VPN server

- L2TP/PPTP/OpenVPN/IPsec XAUTH

Site-to-site VPN

- IPsec: «policy-based» and «route-based» modes
- DMVPN
- DES, 3DES, AES, Blowfish, Camellia encryption algorithms
- IKE MD5, SHA-1, SHA-2 message authentication

Tunneling

- IPoGRE, EoGRE
- IPIP
- L2TPv3
- LT (inter VRF-lite routing)

L2 functions

- Packet switching (bridging)
- STP, RSTP, MSTP 802.1D (only for ESR-1000)
- LAG/LACP (802.3ad)
- VLAN support (802.1Q)
- Port Isolation (only for ESR-1000)
- Private VLAN Edge (PVE) (only for ESR-1000)
- Logical interfaces
- LLDP, LLDP MED
- VLAN-based MAC

L3 functions (IPv4/IPv6)

- NAT, Static NAT, ALG
- Static routes
- Dynamic routing protocols RIPv2, OSPFv2/v3, BGP
- Route filtering (prefix list)
- VRF Lite
- Policy Based Routing (PBR)
- BFD for BGP, OSPF, static routes

Network security functions

- Intrusion Detection/Prevention system (IPS/IDS)¹
- Web filtering by URL, by content (cookies, ActiveX, JavaScript)
- Zone-based Firewall
- Firewall filtering based on L2/L3/L4 fields and applications
- Support for access control lists on the base of L2/L3/L4 fields
- Protection from DoS/DDoS attacks and notification on them
- Logging of attack and rule triggering events

SLA control functions

- Eltex SLA
- Channel parameters evaluation:
 - Delay (one-way/two-way)
 - Jitter (one-way/two-way)
 - Packet loss (one-way/two-way)
 - Packet Error Rate
 - Out-of-order delivery
- Wellink SLA (wiSLA)¹

QoS (QoS)

- User termination
- White/black URL lists
- Quotas for traffic volume, session time, network applications
- HTTP/HTTPS Proxy
- HTTP/HTTPS Redirect
- Session accounting via Netflow protocol
- Interaction with AAA, PCRF
- Bandwidth management by offices, SSIDs and user sessions
- User authentication by MAC or IP address

IP addressing management (IPv4/IPv6)

- Static IP addresses
- DHCP client
- DHCP Relay Option 82
- Built-in DHCP server, support for options: 43, 60, 61, 150
- DNS resolver
- IP unnumbered

Quality of Service (QoS)

- Up to 8 priority queues per port
- L2 and L3 traffic prioritization (802.1p, DSCP, IP Precedence)
- RED, GRED congestion avoidance algorithms
- Precedence re-marking mechanisms
- Applying policies (policy-map)
- Bandwidth management (shaping)
- Hierarchical QoS
- Session tagging

Network reliability assurance means

- Dual homing (only for ESR-1000)
- VRRP v2,v3
- Route tracking based on VRRP state
- WAN interfaces load balancing, data stream redirection, channel switching during QoS control
- Firewall sessions backup

Management and monitoring

- Support for standard and extended SNMP MIB, RMONv1
- Built-in Zabbix agent
- User authentication through a local database via RADIUS, TACACS+, LDAP
- Protection from configuration errors, automatic configuration recovery. Ability to reset configuration to factory settings
- CLI
- Syslog support
- System resources usage monitoring
- Ping, traceroute (IPv4/IPv6), displaying information on packets in the console
- Firmware update, configuration upload and download via TFTP, SCP, FTP, SFTP, HTTP(S)
- NTP support
- Netflow v5/v9/v10 (exporting of URL statistics for HTTP, host for HTTPS)
- Local control via RS-232 (RJ-45)
- Remote control via Telnet, SSH (IPv4/IPv6)
- Displaying information on services/processes
- Local/remote router configuration storage

Ordering information

| Name | Description |
|-----------------------------|---|
| ESR-10 | Service router ESR-10, 4xEthernet 10/100/1000BASE-T, 2x1000BASE-X (SFP), 1xRS-232 (RJ-45), 2xUSB2.0, 2GB RAM, 512MB NAND-Flash, 12 VDC (220 VAC via power adapter). |
| ESR-12V | Service router ESR-12V, 8xEthernet 10/100/1000BASE-T, 1xRS-232 (RJ-45), 2xUSB2.0, 3xFXS, 1xFXO, 2GB RAM, 512MB NAND-Flash, 220 VAC. |
| ESR-12VF | Service router ESR-12VF, 8xEthernet 10/100/1000BASE-T, 1x1000BASE-X (SFP), 1xRS-232 (RJ-45), 2xUSB2.0, 3xFXS, 1xFXO, 2GB RAM, 512MB NAND-Flash, 220 VAC. |
| ESR-14VF¹ | Service router ESR-14VF, 8xEthernet 10/100/1000BASE-T, 1x1000BASE-X (SFP), 1xRS-232 (RJ-45), 2xUSB2.0, 4xFXS, 2GB RAM, 512MB NAND-Flash, 220 VAC. |
| ESR-20 | Service router ESR-20, 2x10/100/1000BASE-T, 2xCombo 10/100/1000BASE-T/1000BASE-X (SFP), 1xUSB 2.0, 1xUSB 3.0, 1 slot for SD cards, Console, 4GB RAM, 4GB Flash, Built-in 220 VAC power module. |
| ESR-21 | Service router ESR-21, 8x10/100/1000BASE-T, 4x10/100/1000BASE-X, 1xUSB 2.0, 1xUSB 3.0, 1 slot for SD cards, Console, Serial (RS-232), 4GB RAM, 4GB Flash, Built-in 220 VAC power module. |
| ESR-100 | Service router ESR-100, 4xCombo 10/100/1000BASE-T/1000BASE-X SFP, 1xUSB 2.0, 1xUSB3.0, 1 slot for SD cards, 4GB RAM (8GB available upon a request), 1GB NAND-Flash, Built-in 220 VAC power module. |
| ESR-200 | Service router ESR-200, 4x10/100/1000BASE-T, 4xCombo 10/100/1000BASE-T/1000BASE-X SFP, 1xUSB 2.0, 1xUSB3.0, 1 slot for SD cards, 4GB RAM (8GB available upon a request), 1GB NAND-Flash, Built-in 220 VAC power module. |
| ESR-1000 | Service router ESR-1000, 24x10/100/1000BASE-T, 2x10GBASE-R SFP+, 2xUSB 2.0, 1 slot for SD cards, 4GB RAM (8GB available upon a request), 1GB NAND-Flash, 2 slots for 220 VAC or 48 VDC power modules. |
| ESR-1200 | Service router ESR-1200, 4xCombo 10/100/1000BASE-T/1000BASE-X, 8x10GBASE-R SFP+, 12x10/100/1000BASE-T, 2xUSB 2.0, 1 slot for SD cards, 4GB RAM (8GB available upon a request), 1GB NAND-Flash, 2 slots for 220 VAC or 48 VDC power modules. |
| ESR-1500 | Service router ESR-1500, 4x10/100/1000BASE-T, 4xCombo 10/100/1000BASE-T/1000BASE-X, 4x10GBASE-R SFP+, 4GB RAM, 1GB NAND-Flash, 2 slots for 220 VAC power modules. |
| ESR-1700 | Service router ESR-1700, 4xCombo 10/100/1000BASE-T/1000BASE-X, 8x10GBASE-R SFP+, 32GB RAM, 1GB SSD, 2 slots for 220 VAC or 48 VDC power modules. |


Power modules²

| Device | AC power module | DC power module |
|-----------------|-----------------|-----------------|
| ESR-1000 | PM160-220/12 | PM100-48/12 |
| ESR-1200 | PM160-220/12 | PM100-48/12 |
| ESR-1500 | PM160-220/12 | — |
| ESR-1700 | PM350-220/12 | PM350-48/12 |

¹ The model is available upon a request

² Ordered separately

Contact us



+7 (383) 274 10 01
+7 (383) 274 48 48



eltex@eltex-co.ru



www.eltex-co.com

About Eltex

Eltex company is a leading Russian developer and manufacturer of telecommunication equipment with 25 years of history. Integrity of solutions and seamless integration capability into Customer infrastructure is a priority area of company development.